

M.E. 1-81.

I N S T R U C T I O N S  
F O R T H E  
G U I T A R;

W I T H  
A C O L L E C T I O N O F A I R S, S O N G S A N D D U E T S,  
fitted for that INSTRUMENT;

By  
R O B E R T B R E M N E R.

E D I N B U R G H:

Printed and Sold at his Music-Shop, where may be had GUITARS from two to six Guineas.

[Price One Shilling and Six-pence.]

68. 3-4

6<sup>th</sup> or thick  
5<sup>th</sup> String  
4<sup>th</sup> String  
3<sup>rd</sup> String  
2<sup>d</sup> String  
1<sup>st</sup> String

(1) (2) (3) (4)

(5)

(7)

1  $\circ$  Semibreve — Rests  
is equal to 2  $\circ$  Minims —  
or 4  $\circ$  Crotchets  
or 8  $\circ$  Quavers  
or 16  $\circ$  Semiquavers  
or 32  $\circ$  Demisemiquavers

(8)

The G. or Fiddle (Lift Bars)

Common Time C.  $\frac{1}{2}$ .  $\frac{3}{4}$ .  
Triple Time  $\frac{3}{2}$ .  $\frac{3}{4}$ .  $\frac{3}{8}$  —  $\frac{2}{4}$ .  $\frac{2}{8}$  —  $\frac{6}{4}$ .  $\frac{6}{8}$ .  $\frac{12}{8}$   
A Sharp  $\sharp$ . A Flat  $\flat$ . A Natural  $\natural$ .

Shake  $\text{tr}$  Beat  $\text{+}$  Mur

Example

(9)

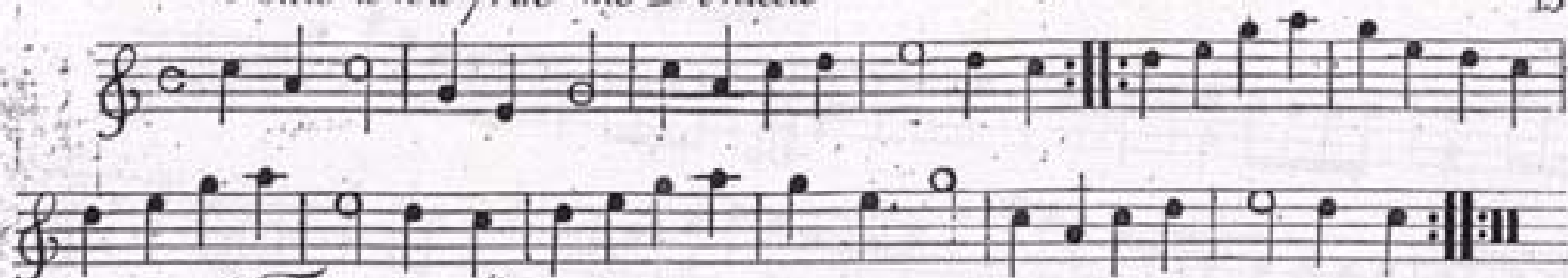
(10) (11) (12) (13)

(14)

(15)

(16)

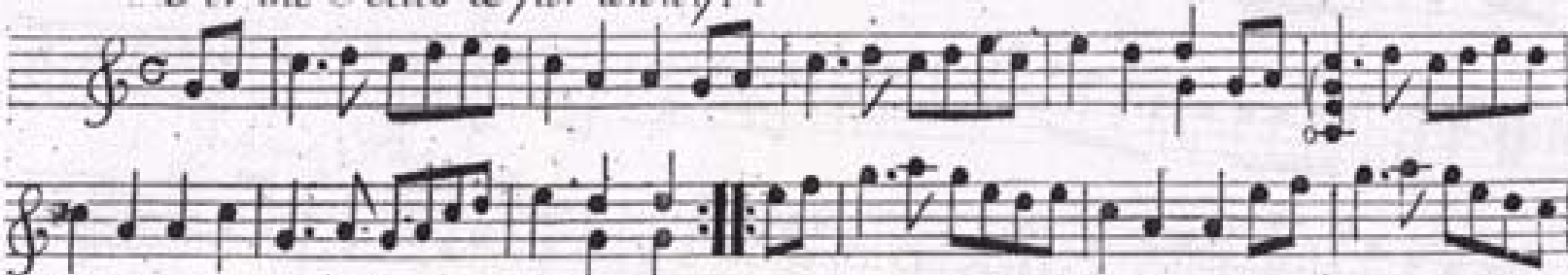
*Hail a wa frae me Donald*



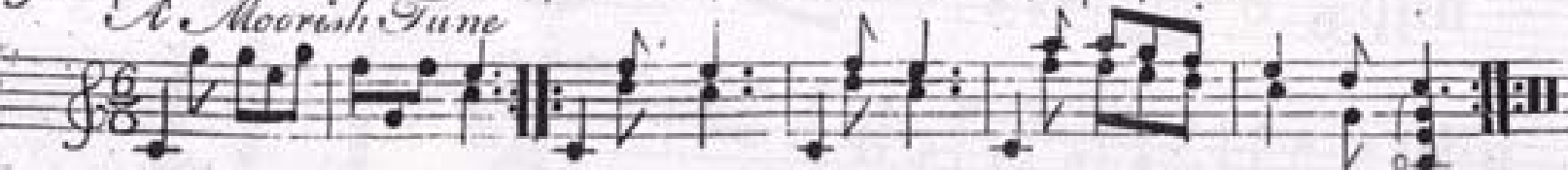
*A French March.*



*O'er the Hills & far away.*



*A Moorish Tune*



The Stadholder's Minuet.

Musical notation for 'The Stadholder's Minuet'. It consists of five staves of music in 3/4 time. The melody is written in treble clef, and the accompaniment is in bass clef. The piece features a mix of eighth and sixteenth notes, with some rests and dynamic markings.

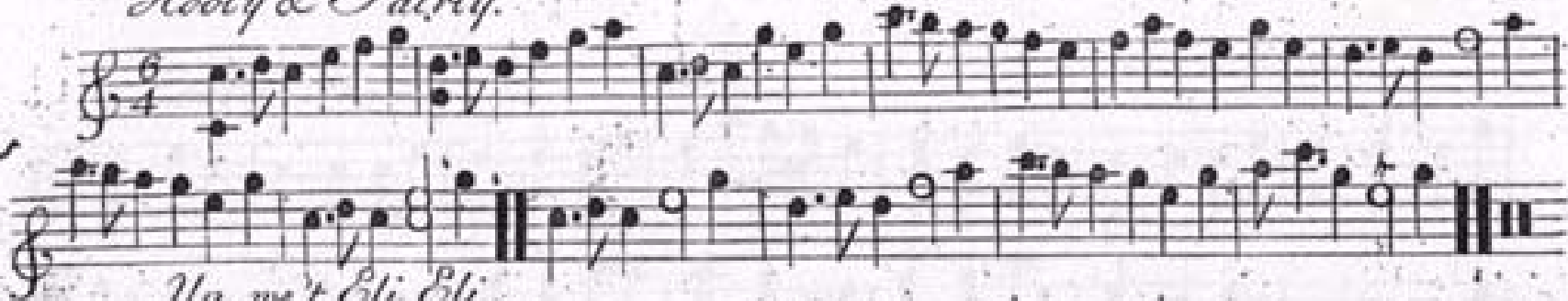
Johnnie Paa

Musical notation for 'Johnnie Paa'. It consists of two staves of music in 2/4 time. The melody is in treble clef, and the accompaniment is in bass clef. The piece is characterized by a lively, rhythmic melody with many eighth notes and some triplets. There are dynamic markings such as 'f' and 'p' throughout.

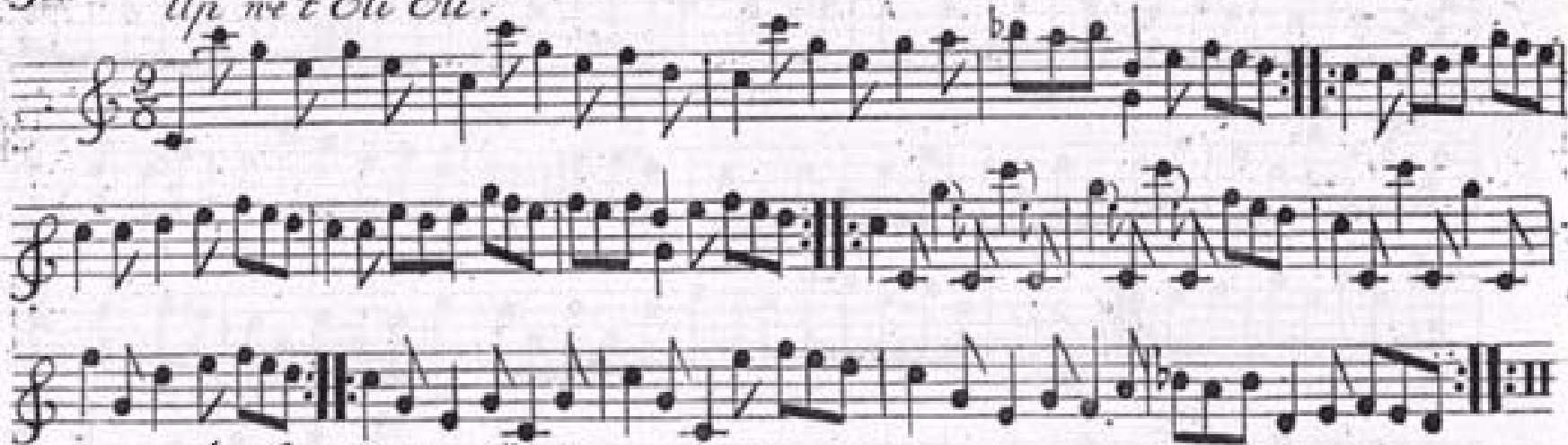
A Moorish Tune

Musical notation for 'A Moorish Tune'. It consists of one staff of music in 2/4 time. The melody is in treble clef, and the accompaniment is in bass clef. The piece features a slow, melodic line with some triplets and a final flourish. There are dynamic markings like 'f' and 'p'.

*Hoody & Fairly.*



*Up we't Eli Eli.*



*A Strathpey Reel.*



18 Lovly Nancy

Musical score for 'Lovly Nancy' consisting of five staves. The first staff is the melody in treble clef, 5/4 time signature. The second and third staves are accompaniment in treble clef, 2/4 time signature. The fourth and fifth staves are accompaniment in treble clef, 2/4 time signature. The piece concludes with a double bar line and repeat dots.

Port Patriok

Musical score for 'Port Patriok' consisting of three staves. The first staff is the melody in treble clef, 6/8 time signature. The second and third staves are accompaniment in treble clef, 6/8 time signature. The piece concludes with a double bar line and repeat dots.

*Black Jack.*

Handwritten musical score for 'Black Jack' in 6/8 time. The score consists of five staves of music. The first staff begins with a treble clef, a 6/8 time signature, and a key signature of one flat (B-flat). The melody is written in a single line. The second and third staves continue the melody with various rhythmic patterns, including eighth and sixteenth notes. The fourth and fifth staves conclude the piece with a double bar line and repeat signs.

*Mill Mille.*

Handwritten musical score for 'Mill Mille' in common time (C). The score consists of three staves of music. The first staff begins with a treble clef and a common time signature. The melody is written in a single line. The second and third staves continue the melody with various rhythmic patterns, including eighth and sixteenth notes. The third staff concludes the piece with a double bar line and repeat signs.



*Tweed Side.*

Musical notation for the piece 'Tweed Side'. It consists of three staves. The first staff is in treble clef with a 3/4 time signature. The second and third staves are in bass clef. The music features a mix of eighth and sixteenth notes, with some triplets. There are repeat signs and a double bar line at the end of the third staff.

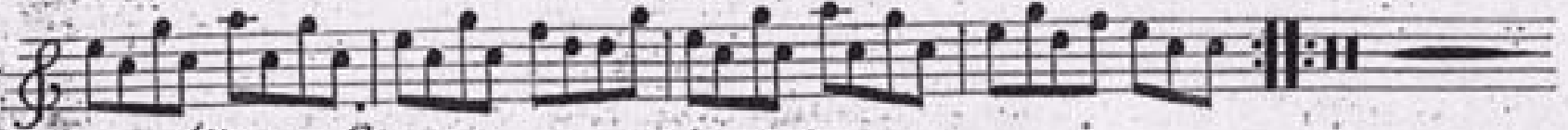
*Minuet.*

Musical notation for the piece 'Minuet'. It consists of two staves. The first staff is in treble clef with a 3/4 time signature. The second staff is in bass clef. The music is primarily composed of eighth notes and rests. It ends with a double bar line and repeat signs.

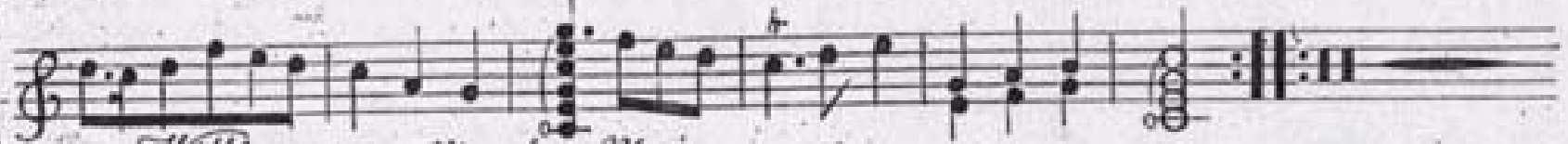
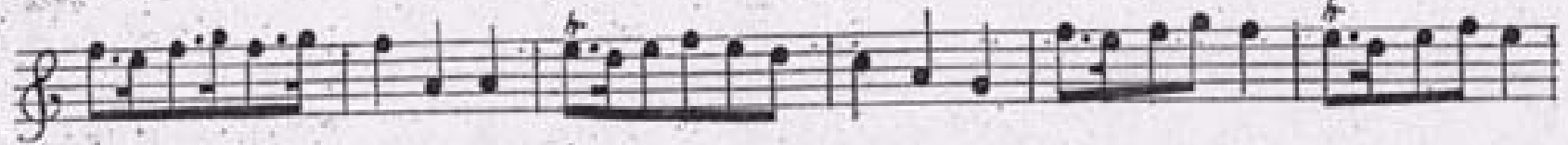
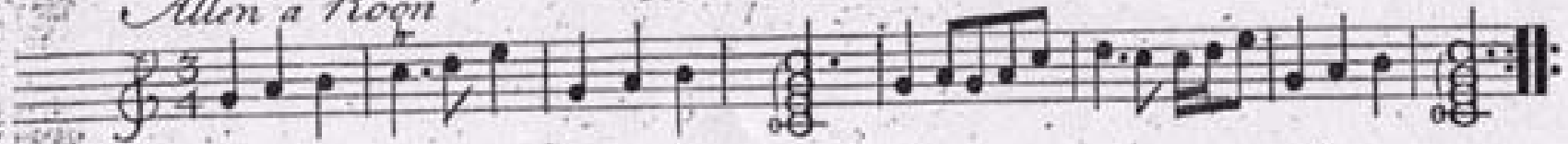
*Birks of Endermay.*

Musical notation for the piece 'Birks of Endermay'. It consists of three staves. The first staff is in treble clef with a common time signature. The second and third staves are in bass clef. The music features a mix of eighth and sixteenth notes, with some triplets. There are repeat signs and a double bar line at the end of the third staff.

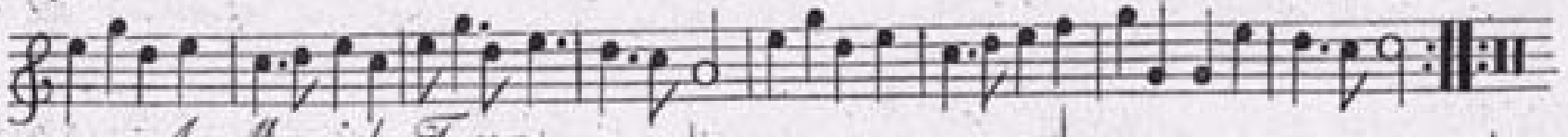
*A Reel.*



*Allen a Roon*



*Willie was a Wanton Wag.*



*A Moorish Tune*



*Bochaber.*

Musical score for 'Bochaber' in 3/4 time. It consists of four staves. The first staff is the treble clef melody. The second staff is the bass clef accompaniment. The third and fourth staves are for the right and left hands of a piano, respectively, with a 'piano' dynamic marking. The piece concludes with a double bar line and repeat dots.

*Minuet.*

Musical score for 'Minuet' in 3/4 time. It consists of two staves. The first staff is the treble clef melody, featuring several triplet markings. The second staff is the bass clef accompaniment. The piece concludes with a double bar line and repeat dots.

*Keep the Country Bonny Lassie.*

Musical score for 'Keep the Country Bonny Lassie' in 2/4 time. It consists of two staves. The first staff is the treble clef melody. The second staff is the bass clef accompaniment. The piece concludes with a double bar line and repeat dots.

*Duet.*

*Briske*

A handwritten musical score for a Duet, titled "Briske". The score consists of ten staves of music, arranged in five pairs. Each pair represents a different instrument, likely a violin and a flute or similar woodwind. The music is written in a single system with a common time signature (C) and a key signature of one flat (B-flat). The notation includes various rhythmic values such as eighth and sixteenth notes, rests, and dynamic markings like "p" (piano) and "f" (forte). The score concludes with a double bar line and repeat signs on the final two staves.

The Highland March

Musical score for 'The Highland March' in 2/4 time. The score consists of two systems of two staves each. The first system is bracketed together. The music is written in treble clef with a common time signature. It features a series of eighth and sixteenth notes, with some triplets and a repeat sign in the middle of the second system.

The Edinburgh Train Bands March

Musical score for 'The Edinburgh Train Bands March' in 2/4 time. The score consists of two systems of two staves each. The first system is bracketed together. The music is written in treble clef with a common time signature. It features a series of eighth and sixteenth notes, with some triplets and a repeat sign in the middle of the second system.

The first section of the music is a piano accompaniment consisting of four staves. The top two staves are in treble clef, and the bottom two are in bass clef. The music features a mix of eighth and sixteenth notes, with some rests and repeat signs.

*The Bush aboon Traquair.*

Hear me, ye Nymphs & e-very Swain, I'll tell how Peggy griev'd me, tho'  
 thus I languish & complain, alas she never believes me, my  
 Vows & sighs like silent Air, un-heeded ne-...ver move her, the  
 Bonny Bush aboon Traquair! was where I first did love her.

The vocal line is written on a single staff in treble clef. The lyrics are written below the notes. The music includes various note values, rests, and repeat signs.

### Let Ambition.

Let Ambition fire the Mind Thou wert Born for Men to Reign  
 not to follow flocks de-sign'd, Scorn the Crook and leave the Plain

### Hebe

Fair Hebe I left with a Cautious design to escape from her Charms & to  
 drown them in Wine I try'd it but found when I came to de-  
 part the Wine in my Head but still Love in my Heart

I flew to my Reason<sup>2</sup> intreated her Aid,  
 She paus'd on my Case & each circumstance weigh'd.  
 Then gravly reply'd in return to my prayer,  
 That Hebe is fairest of all that are fair.  
 That truth reply'd I've no need to be taught,  
 I came for a Council to find out a fault.  
 If that's all said Reason return as you came;  
 To find fault with Hebe wou'd forfeit my name.

*Lefson*

A handwritten musical score for a piece titled "Lefson". The score is written on six staves in treble clef with a common time signature (C). The first staff begins with a treble clef and a common time signature. The music consists of a series of rhythmic patterns, including eighth and sixteenth notes, often beamed together. There are several measures with asterisks above them, possibly indicating specific performance techniques or ornaments. The piece concludes with a double bar line and a fermata.

*A Moorish Tune.*

A handwritten musical score for a piece titled "A Moorish Tune". The score is written on two staves in treble clef with a 6/8 time signature. The music features a simple, rhythmic melody with dotted rhythms and eighth notes. It concludes with a double bar line and a fermata.